

SPECIFICATIONS

Description	Ultrasonic Cleaner	
Model	D-3000	
Tank Capacity	450 ml 0.48 quart (US)	Max.330 ml / 0.35 quart (US)
Tank Size	15.5x8.0x3.8 cm / 6.1"x3.1"x1.5"	
Longest Item Fits inside Tank	15.5 cm / 6.1"	
Power Supply	26W (AC 100 V, 50/60 Hz)	
	26W (AC 100-120 V, 50/60 Hz)	
	35 W (AC 220-240 V, 50 Hz)	
Ultrasonic Frequency	42,000 Hz	
Tank Material	Stainless Steel SUS304	
Housing Material	ABS	
Net Weight	0.82 kg / 1.8 lb	
Gross Weight	1.08 kg / 2.4 lb	
Unit Size	19.6 x11.8 x11.9 cm / 7.7" x 4.6" x 4.7"	
Inner Carton Size	23.2 x 17.0 x 16.6 cm / 9.1" x 6.6" x 6.5"	
Qty per Master Carton	12 pcs	
Master Carton Size	53 x 48.5 x 34.5 cm / 20.8" x 19.0" x 13.5"	

Ultrasonic Cleaner

D-3000

USER MANUAL



FEATURES

- 1 Stainless steel tank** Tank capacity: 450ml / 0.48 qt
Tank size: 15.5 x 8.0 x 3.8 cm / 6.1"x3.1"x1.5"
- 2 Control button with capacitive sensing technology** Better water proof and reliability
- 3 One button with 3-minute auto shutoff** Easy to operate
- 4 Ultrasonic frequency 42,000Hz** Quiet, efficient
- 5 Industrial grade IC** Good anti-interference performance
- 6 Detachable power cord** Convenient to use

INTRODUCTION

Use tap water. Chemical solutions are unnecessary in most cases.

Principles of ultrasonic cleaning:

Millions of tiny air bubbles are generated inside the liquid by high frequency vibration. The air bubbles bust inside the liquid and shake off the debris to achieve the cleaning effect.

- Purified water or distilled water has the same cleaning effect as regular tap water for ultrasonic cleaning. Therefore using tap water is sufficient.
- When cleaning silver or copper items where oxidation has darkened the items, special solutions need to be added to the water to remove the oxidation.

Main Features

- Stainless steel tank. Tank capacity: 450 ml / 0.48 qt. Tank size: 15.5 x 8.0 x 3.8 cm / 6.1" x 3.1" x 1.5". Longest item that can fit inside the tank is 15.5 cm / 6.1".
- Control button with capacitive sensing technology, better water proof and reliability.
- One button with 3-minute auto shutoff, easy to operate.
- Ultrasonic frequency 42,000Hz, quiet, efficient.
- Industrial grade IC, good anti-interference performance.
- Detachable power cord , convenient to use.

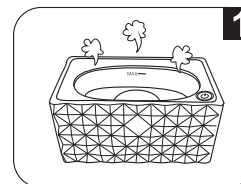
Read the Manual First

The manual should be carefully reviewed before starting to use the device. Warnings should be observed carefully. Please follow the manual for operations.

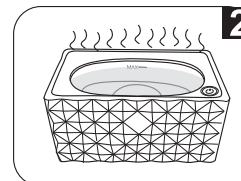
TABLE OF CONTENTS

Safety Precautions-----	1/2
Items Not Suitable for Ultrasonic Cleaning -----	2
Sample Applications -----	3
Product Exploded View-----	4/5
Product Structure and Accessories -----	6
Control Panel and Operations -----	6
Common Cleaning Methods -----	7
Usage Of Optional Accessories -----	7
Operation Guidelines -----	8
Care and Maintenance -----	9
Specifications -----	10

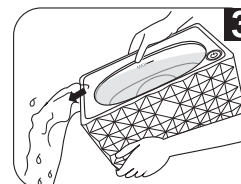
CARE AND MAINTENANCE



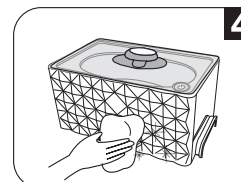
Do not turn on the unit without water in the tank.
If it is turned on for over 30 seconds without water in the tank, it may damage the unit or severely reduce the life of the unit.



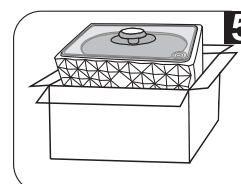
Do not run the unit for extended time or continuously.
Do not run the unit continuously for over 20 minutes. Stop for about 10 minutes in between to prolong the life of the unit.



Do not keep water in the cleaning tank for a long time.
After cleaning is completed, unplug the power cord then pour the water out through the pouring recess. Avoid getting the water inside the housing through the vents and causing damage.

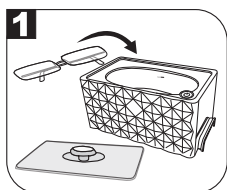


Do not spray water over the housing.
Use a towel to wipe the tank and the housing.




Do not expose the unit under direct sun shine for long.
Keep the unit in a dry, cool and ventilated area.

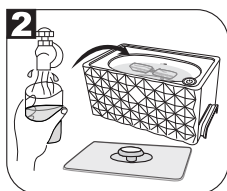
OPERATION INSTRUCTIONS



Remove the lid.

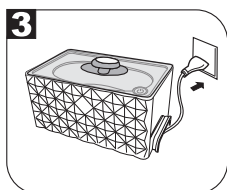
Put the items into the tank.

 *If cleaning eyeglasses, put the lenses upward to avoid scratching*



Fill the tank with water.

The water should cover the items to be cleaned but not exceed "MAX" line.



Put the lid on, plug in the power cord.

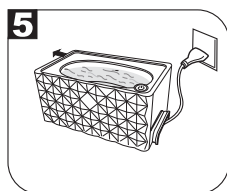
Then press "⏻" button to start cleaning .

The On/Off button can be operated with the lid in place.



If more cleaning is needed, press "⏻" button again. You can press "⏻" button during cleaning if you want to stop it.

Buzzing sound can be heard during cleaning. It is an indication that the unit is working.




When cleaning is done, unplug the power cord, remove the lid, pour water out in the direction shown. Wipe it clean.

Do not pour water over the power socket. If it's wet, stop using and wait until it is dry.

SAFETY PRECAUTIONS



Keep it away from children!

-  This appliance can be used by children aged from 8 years and above if they have been given supervision or instruction concerning use of the appliance in a safe way and if they understand the hazards involved. Cleaning and user maintenance shall not be made by children unless they are aged from 8 years and above and supervised. **Keep the appliance and its cord out of reach of children aged less than 8 years.**
- Please store the ultrasonic cleaner where it is not reachable by children.
- Danger to children! Danger for death through suffocation! Keep the packaging material away from children.
- This appliance shall not be used by children. Keep the appliance and its cord out of reach of children.



To prevent life-threatening electrical shock, please observe the following:



Danger of electrical shock! Do not use while bathing. Never immerse the device or the power cord in water or other liquid.

- **Danger of electrical shock!** Never touch the power plug with wet hands, especially when inserting or removing the plug.
- **Danger of electrical shock!** If the unit has fallen into water during operation, do not touch the unit. Remove the power plug from the socket first.
- **Danger of electrical shock!** Do not spray water or liquid over the device.
- Never operate the device unattended.
- Follow the manual to operate the device.
- Do not use components unapproved by the manufacturer.
- When removing the power cord from the socket, grab the power plug not the cord.
- To protect the power cord from damage, do not cause it to get caught by things such as a cupboard door or a chair leg; do not drag across a hot surface.
- If there is damage to the power plug, cord, housing, or other parts of the device, do not use the device.
- Do not disassemble the device, except by professionals.
- If the unit is damaged, non-operational or has fallen into water, take it to a qualified service provider.
- Remove the power plug from the socket
 - if malfunction occurs
 - before cleaning the device
 - if the device is not going to be used for prolonged period
 - after each use (recommended)
- The installation of an earth leakage circuit breaker with a rated tripping current of no more than 30 mA provides further protection against an electrical shock. The installation should only be carried out by a trained electrician.



To prevent fire hazards, please observe the following:

- Never block the vents on the device. Keep the vents free from lint, hair and other materials.
- Do not place the device on a soft surface, such as a bed or a couch, where the vents could be blocked.
- Observe the other warnings in the previous section.
- If the supply cord is damaged, it must be replaced by the manufacturer or its service agent or a similarly qualified person in order to avoid a hazard.

SAFETY PRECAUTIONS



Other observations:

- Do not operate the product without filling the tank with water. Running dry will damage the unit.
- Do not plug in the power cord before adding water to the tank. Do not fill the tank above the Max line to avoid overspill.
- Do not use solution containing abrasive substances or strong corrosive chemical solution not recommended by the manufacturer or the supplier.
- Place the device on a dry and flat surface for operation.
- When the device is subjected to severe electromagnetic interference, it may malfunction, stop operating or lose control functions. If this happens, unplug the power cord then reinsert it to restart the device.

IMPORTANT SAFETY INSTRUCTIONS



When using electric appliances, basic precautions should always be followed, including the following :

- Read all the instructions before using the appliance.
- To reduce the risk of injury, close supervision is necessary when an appliance is used near children.
- Only use attachments recommended or sold by the manufacturer.
- Do not use outdoors.
- To disconnect, turn all controls to the off (O) position, then remove plug from outlet. Do not unplug by pulling on cord. To unplug, grasp the plug, not the cord. Unplug from outlet when not in use and before servicing or cleaning.
- To reduce the risk of electrical shock, do not put the appliance in water or other liquid. Do not place or store appliance where it can fall or be pulled into a tub or sink.
- All servicing of this product, including transducer replacement, is to be conducted by qualified service personnel.
- Do not operate any appliance with a damaged cord or plug, or after the appliance malfunctions or is dropped or damaged in any manner. Return appliance to the nearest authorized service facility for examination, repair, or electrical or mechanical adjustment.



Items Not Suitable for Ultrasonic Cleaning

Soft Jewelry:

Pearls, emerald, ivory, coral, agate, sea turtle shells, etc

These items are not hard, so scratches may occur during cleaning.

Welded, Plated and Glued Items:

Welded or plated metal items, glued items

Ultrasonic cleaning may enlarge the gaps inside the welded joints, plated coating or glued items and may cause separation.

Watches:

Except diver's watches with depth rating over 50 m (150 ft) .

Because the strong penetration capability of the ultrasonic waves, water may get into the watches if they are not truly waterproof. Use the watch stand supplied as a precaution if not sure.

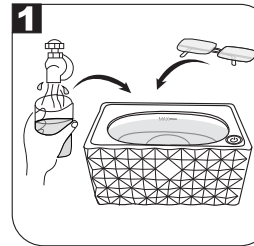
Others:

Wood; coated glass, ceramic, camera filters with preexisting cracks.

Ultrasonic cleaning may enlarge the cracks pre-existed in the coating on the glasses, ceramic, and glass. If the items have no pre-existing cracks, then it is okay.

COMMON CLEANING METHODS

REGULAR CLEANING



Only using normal tap water

Put the items into the tank directly, then fill the tank with tap water. Ensure the items are submerged in the water but do not exceed the "MAX-" mark. Press the "⏻" button to start.

Note: During cleaning, dirt will come off like smoke and the water will become murky over time. When "smoke" stops coming, the cleaning is basically done.

ENHANCED CLEANING

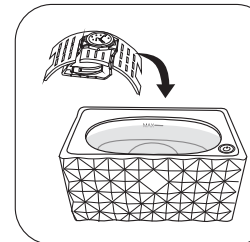


Add appropriate cleaning solutions to water

Cleaning solution can be added to enhance cleaning. Dish detergent can be used in general. Typical mixing ratio is one part of solution to ten parts of water. Once it's done, run it with water only for another 90 seconds to remove residual cleaning solution.

USE OF OPTIONAL ACCESSORIES

WATCH STAND

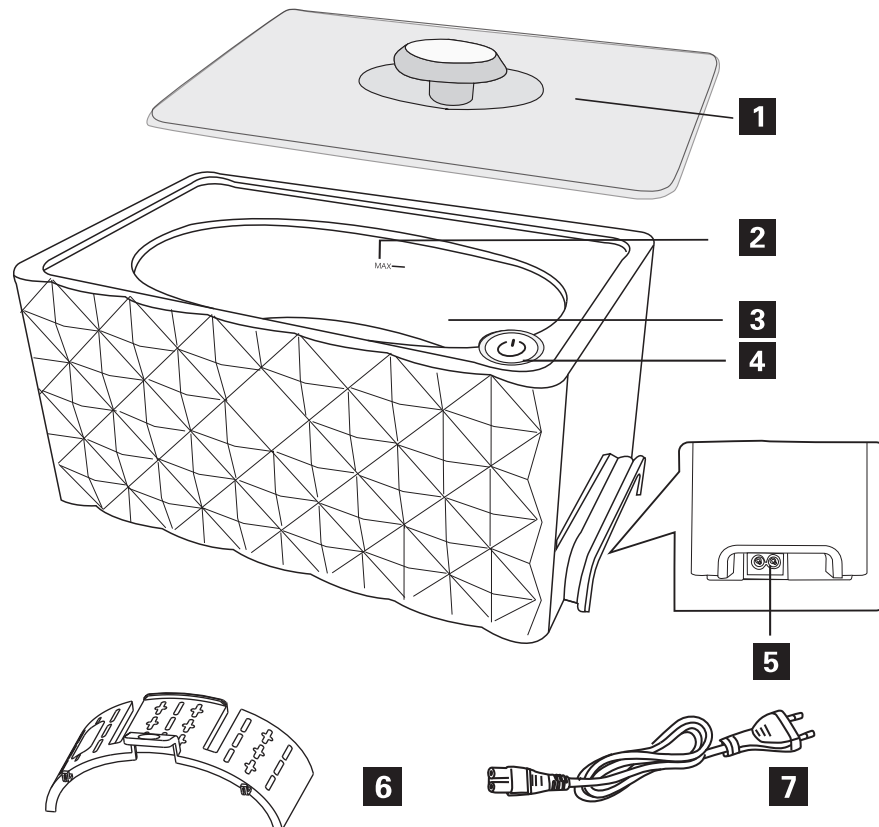


WATCH STAND

Use the watch stand to keep watch body above water while cleaning wristband.

Important: For diver's watch with depth less than 50 m (150 ft), water may get inside if watch body is submerged in the water using an ultrasonic cleaner.

PRODUCT STRUCTURE AND ACCESSORIES

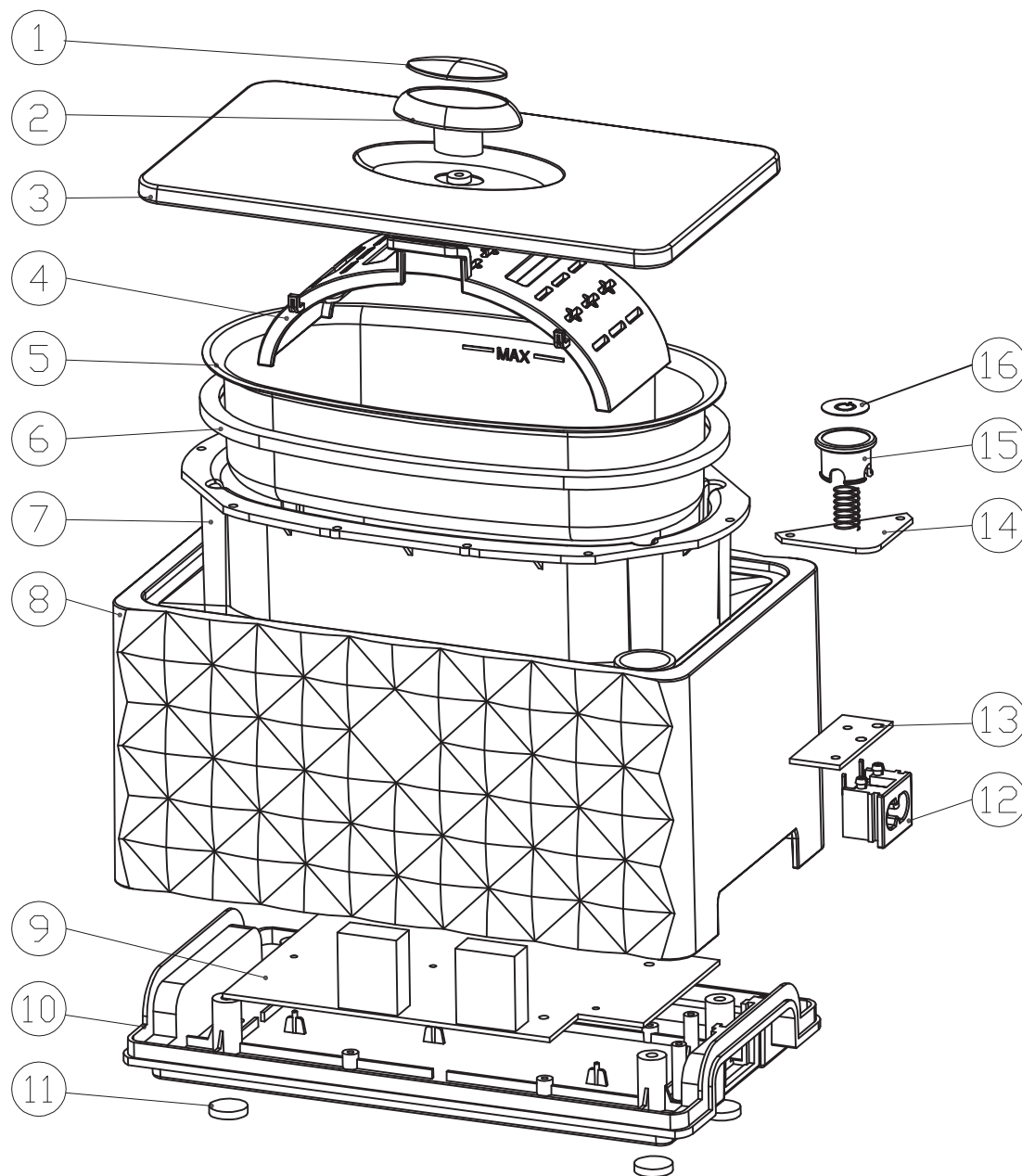


- 1** LID
- 2** "MAX" MARK
- 3** STAINLESS STEEL TANK
- 4** ON/OFF BUTTON
- 5** POWER SOCKET
- 6** PLASTIC WATCH STAND
- 7** POWER CORD

SAMPLE APPLICATIONS

Eyeglasses	Jewelry
Eyeglasses, sunglasses, etc.	Necklaces, rings, earrings, bracelets, etc.
Watch	Cosmetic Products
Watch bands, diver's watches, etc.	Makeup brushes
Denture, Retainers	Personal Items
Denture, retainers, night guards, mouth guards, etc.	Electric shaver heads, electric toothbrush head, clippers heads, etc.

PRODUCT EXPLODED VIEW



D-3000		
No.	Item	Material
①	Handle cover	AS
②	Handle	ABS
③	Lid	AS,ABS
④	Watch stand	ABS
⑤	Stainless steel tank	SUS304
⑥	Silicon seal	Silicone rubber
⑦	Inner tank	ABS
⑧	Housing	ABS
⑨	Main PCB	94V0
⑩	Bottom housing	ABS
⑪	Rubber grommets	Silicone rubber
⑫	Power socket	Standard part
⑬	Mini power PCB	94V0
⑭	Control PCB	94V0
⑮	Transparent button	AS
⑯	Cover film	PC